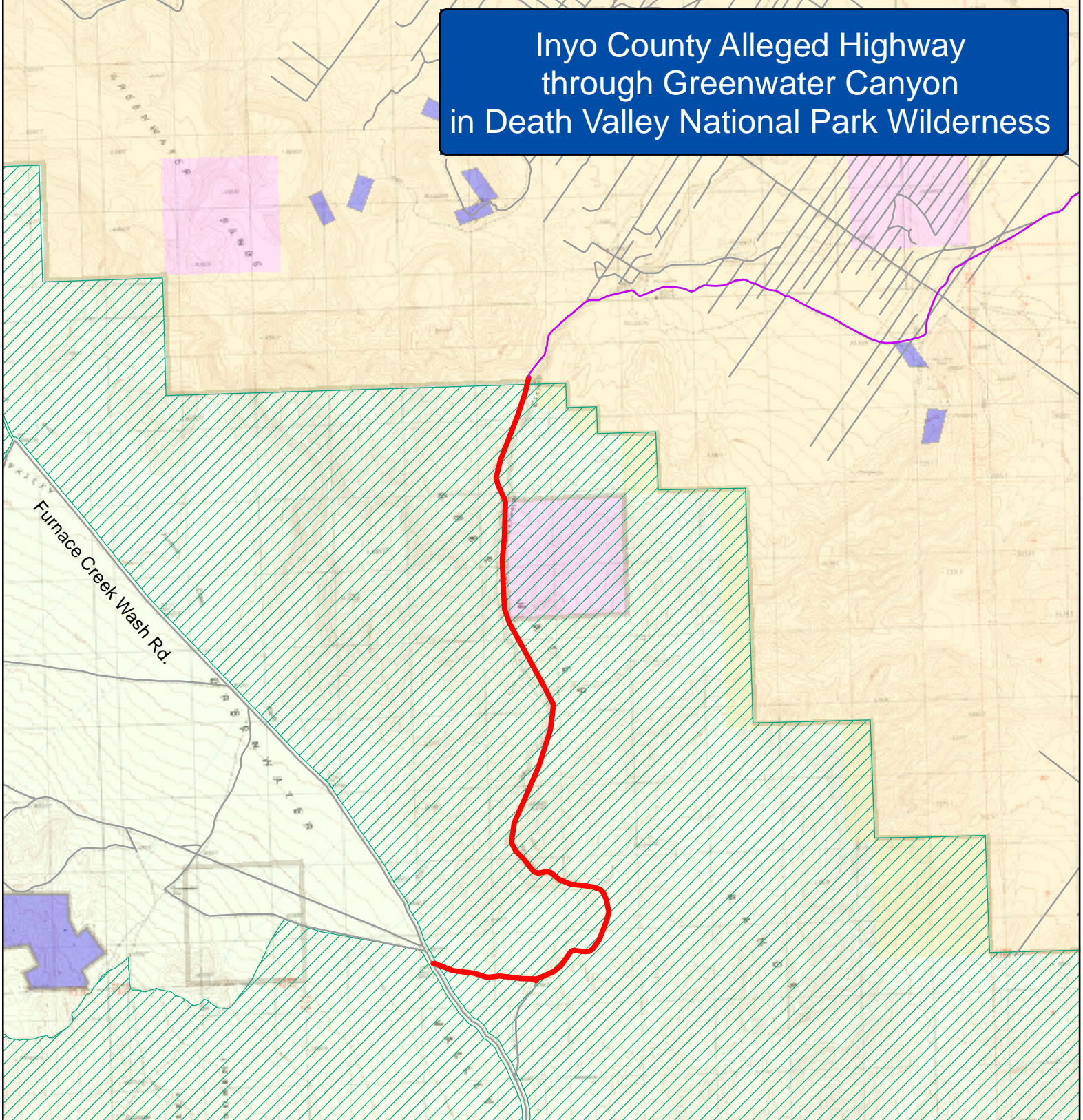


Inyo County Alleged Highway through Greenwater Canyon in Death Valley National Park Wilderness



— Local Road	Land Owners
— Highway	■ Bureau of Land Management
— RS2477 Claims in Wilderness *	■ Private
— RS2477 Claims not in wilderness	■ State
■ Designated Wilderness **	■ National Parks

* Routes digitized from Inyo County Complaint (Case1:06-cv-01502-AWI-DLB) filed 10/25/2006

** Wilderness boundaries were obtained by the National Park Service in draft format and may not be official

